

KEY NOTES LEGEND

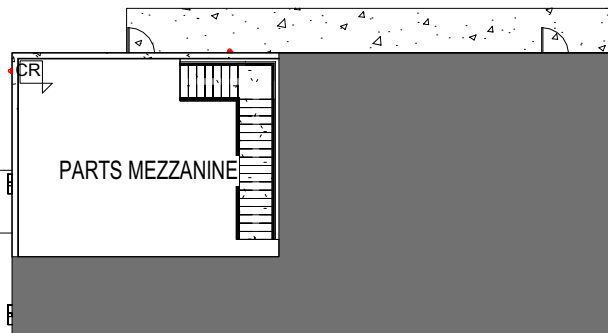
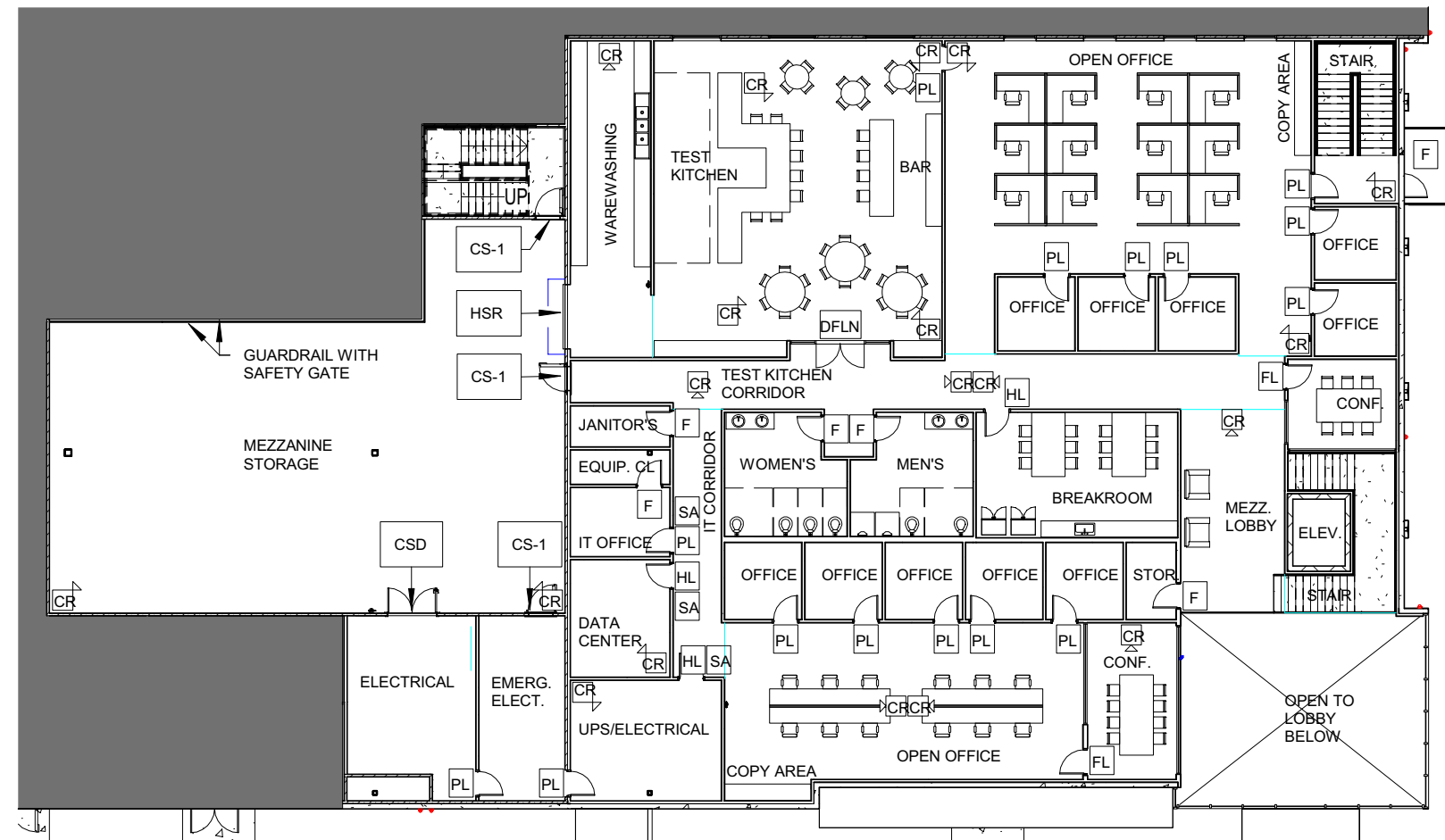
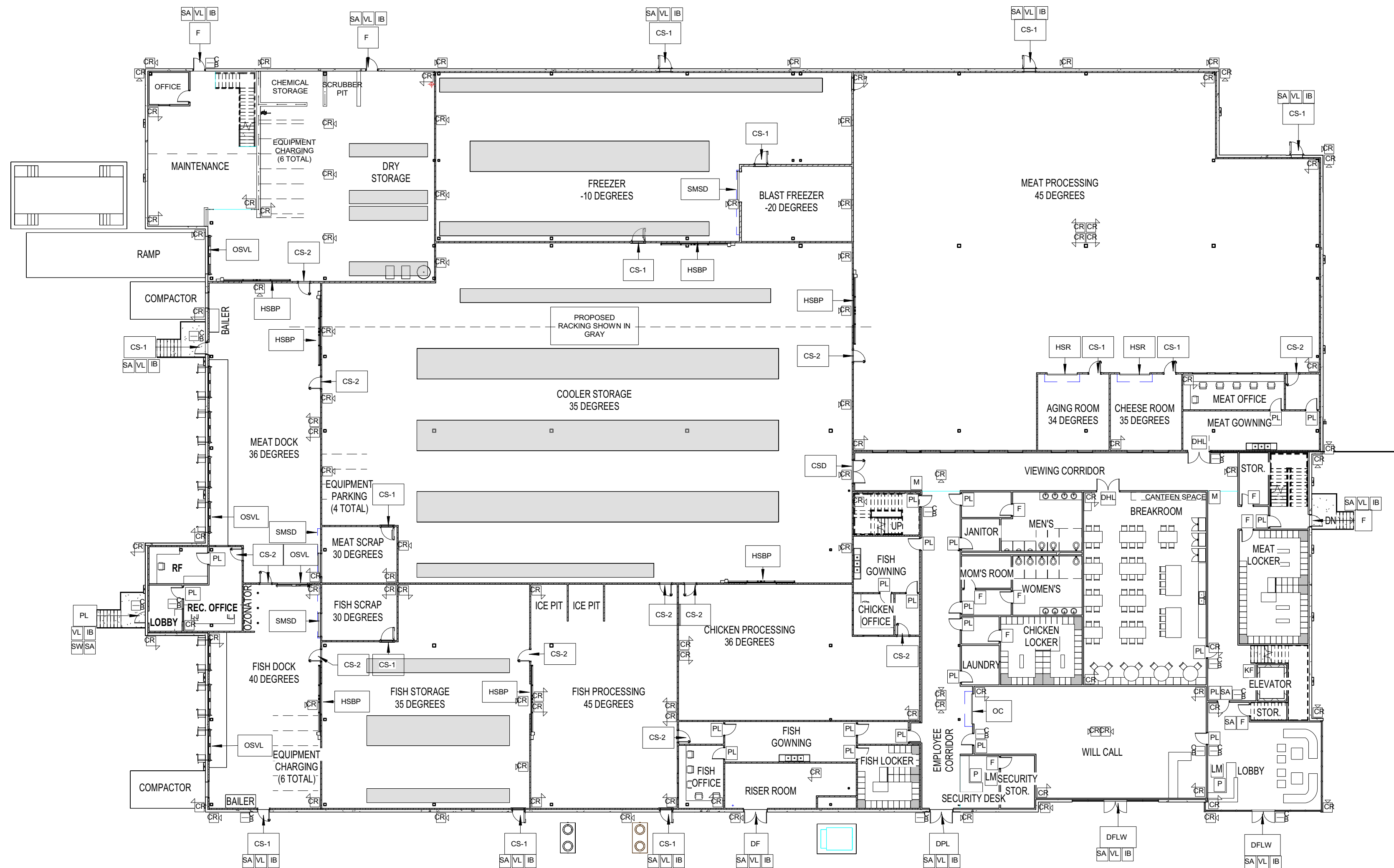
P	FIXED CONCEALED SILENT PANIC DURESS ALARM BUTTON
KF	ACCESS TO ELEVATOR CONTROLLED BY 1ST FLOOR KEY FOB
IB	INTERCOM/BUZZER TIED TO CCTV FOR VIDEO
SW	EXTERIOR DOOR WITH SEE THROUGH REINFORCED SECURITY WINDOW
VL	VANDAL PROOF/RESISTANT MOTION SENSOR SECURITY ALERT LIGHTING
SA	ELECTRONIC DOOR POSITION SWITCH SECURITY ALARM
M	CONVEX MIRROR
LM	LARGE MONITORS FOR VIEWING CAMERA/VIDEO SURVEILLANCE FEEDS

SECURITY SYMBOLS LEGEND

	CARD ACCESS/READER ELECTRIC STRIKE
	CAMERA (VIDEO SURVEILLANCE)

GENERAL NOTES

- HARD WIRED SECURITY SYSTEM WITH BURGLAR ALARM WILL BE INSTALLED, RUNNING, AND MONITORED BY SECURITY TEAM AT ALL TIMES (DURING AND AFTER BUSINESS HOURS).
- SECURITY PERSONNEL WILL BE ON SITE 24/7.
- AUDIO AND VIDEO INTERCOM WILL BE INSTALLED AT ALL SOLID EXTERIOR DOORS THAT DO NOT HAVE A VISION LITE AND MONITORED BY SECURITY TEAM AT BOTH LOBBY AND SECURITY DESKS.
- ALL EXTERIOR DOORS WILL HAVE NON-REMOVABLE DOOR HINGE PINS.
- ELECTRONIC DOOR POSITION SWITCHES WILL BE INSTALLED AT ALL EXTERIOR DOORS TO MONITOR/Detect THE OPEN OR CLOSED STATUS OF DOORS AND SEND STATUS BACK TO SECURITY SYSTEM.
- BLIND AREAS NOT COVERED BY SECURITY CAMERAS HAVE CORNER / CONVEX SECURITY MIRRORS INSTALLED TO ASSIST IN VISIBILITY AROUND BLIND SPOT CORNERS.
- INTERNAL WIFI SYSTEM WILL BE ENCRYPTED AND PASSWORD PROTECTED.
- ALL OFFICE DOORS WILL HAVE A PARTIAL LITE WITH SECURITY GLASS.
- ELEVATOR WILL HAVE ACCESS CONTROL BY 1ST FLOOR FOB.
- PANIC BUTTONS WILL BE PROVIDED AT MAIN ENTRY POINTS OF BUILDING, ALONG WITH PORTABLE LANYARD IN INSTANCE ALARM IS COMPROMISED.
- NO KEYS WILL BE STORED ON SITE.

2 SECURITY PLAN - PARTS MEZZANINE 24X36
3/64" = 1'-0"1 SECURITY PLAN - OFFICE MEZZANINE 24X36
3/64" = 1'-0"3 SECURITY PLAN - OVERALL FIRST FLOOR PLAN 24X36
3/64" = 1'-0"